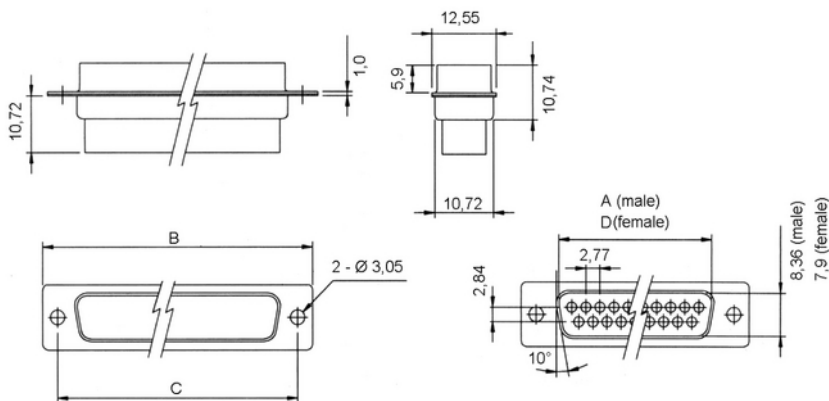
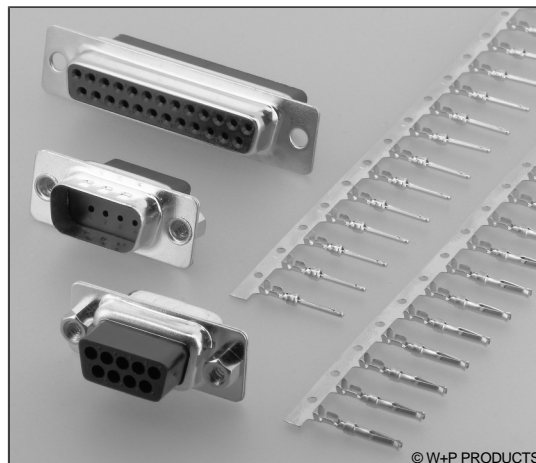


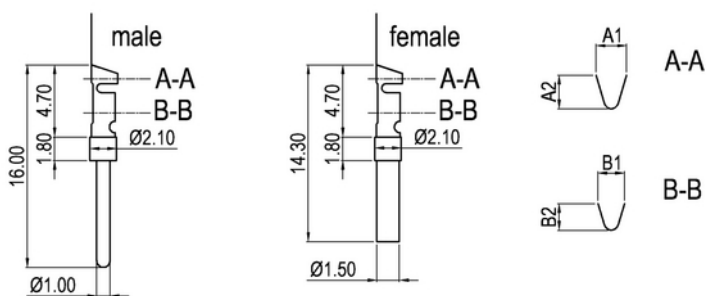
Technische Daten / Technical Data

Gehäuse <i>Shell</i>	Stahl vernickelt, verzinkt <i>Steel, tin coated over nickel</i>
Isolierkörper <i>Insulator</i>	Thermoplast, nach UL94 V-0 <i>Thermoplastic, rated UL94 V-0</i>
Kontaktmaterial <i>Contact Material</i>	Kupferlegierung <i>Copper alloy</i>
Kontaktoberfläche <i>Contact Surface</i>	Gold über Nickel <i>Gold over nickel</i>
Durchgangswiderstand <i>Contact Resistance</i>	< 20 mΩ <i>< 20 mΩ</i>
Isolationswiderstand <i>Insulation Resistance</i>	> 1000 MΩ <i>> 1000 MΩ</i>
Spannungsfestigkeit <i>Test Voltage</i>	1 kV AC <i>1 kV AC</i>
Nennstrom <i>Current Rating</i>	5 A <i>5 A</i>
Temperaturbereich <i>Temperature Range</i>	-55 °C ... +125 °C <i>-55 °C ... +125 °C</i>
Güteklasse <i>Quality Class</i>	GK 3, min. 50 Steckzyklen, andere GK auf Anfrage <i>Quality class 3, min. 50 cycles, more quality options on request</i>



n	A±0.25	B±0.25	C±0.25	D±0.25
09	16.92	30.81	25.00	16.32
15	25.25	39.17	33.32	24.68
25	38.96	53.05	47.04	38.39
37	55.42	69.36	63.50	54.82

Series **115** — **Contacts*** **09** — **Terminal*** **1** — **Mounting*** **0**
 Gehäuse **09/15/25/37** — 1 Stift **0-CL Lt. Tech. Info.**
 Housing — Male — See Tech. Info.
 2 Buchse **See Tech. Info.**
 Female



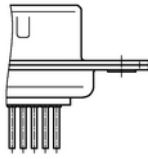
A1±0.05	A2±0.05	B1±0.05	B2±0.05
2.14	2.26	1.75	1.54

Series **115** — **AWG** **24** — **Terminal*** **1** — **Plating** **3** — **Packing** **3**
 Kontakte **24 AWG 24-26** — 1 Stift **3 GK 3 min. 50 Steckzyklen**
 Contacts — Male **Quality Class 3:**
 2 Buchse **min. 50 cycles**
 Female — 3 Auf Rolle
 On reel

* Dies ist ein **Bestellbeispiel** -
 bitte durch Ihre Spezifikationen ersetzen.
 * This is an **order example** -
 please replace by your specifications.

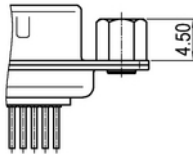
Durchgangsloch / Through Hole

0 Durchgangsloch 3,05mm
3.05mm Through Hole



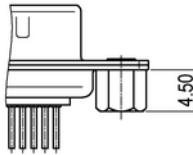
Gewindeniet vorn / Thread Rivet Front

B1 Gewindeniet UNC 4-40
UNC 4-40 Thread Rivet
B2 Gewindeniet M3
M3 Thread Rivet



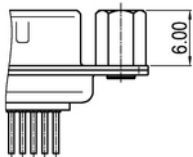
Gewindeniet hinten / Thread Rivet Back

1 Gewindeniet UNC 4-40
UNC 4-40 Thread Rivet
2 Gewindeniet M3
M3 Thread Rivet



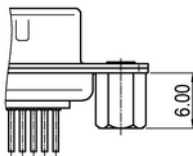
Gewindebolzen vorn / Thread Bolt Front

3 Gewindebolzen UNC 4-40
UNC 4-40 Thread Bolt
4 Gewindebolzen M3
M3 Thread Bolt



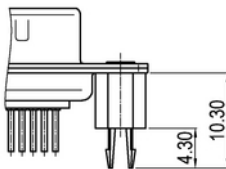
Gewindebolzen hinten / Thread Bolt Back

5 Gewindebolzen UNC 4-40
UNC 4-40 Thread Bolt
6 Gewindebolzen M3
M3 Thread Bolt



Board Lock

BL Board Lock mit UNC 4-40 Gewinde
Board Lock with UNC 4-40 Thread



Combi-Lock

CL Combi-Lock mit UNC 4-40 Gewinde
Combi Lock with UNC 4-40 Thread

