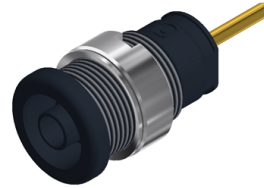

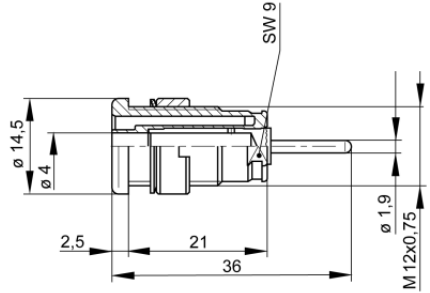


Sockets

SEB 2630 S1,9



Product	SEB 2630 S1,9
description	Safety built-in socket, 4mm diameter, contact-protected, with 1.9mm soldering spike, gold-plated brass. For installation into switchpanels and equipment chassis with wall thicknesses up to 6mm. Soldering spike can be soldered into printed boards. Installation hole: 12.2 mm diameter. Accessory: assembly tool MW SEB Tightening torque: 50Ncm
operating instruction	BA451
article-no. / *colour	9723591xx  Au
drawing	
technical data	
connection	solder connection
rated voltage ⁽¹⁾	AC/DC 1000 V
measurement cat. acc. to IEC 61010	CAT III
rated current ⁽¹⁾ (consider derating curve)	24 A
material socket	brass, gold plated
housing material	PA
temperature range acc. To IEC61010 ⁽²⁾	-40 °C to +80 °C

4 mm safety system

inflammability class acc. to UL 94 (only valid for basic material of housing)	V-2
standard	IEC 61010

⁽¹⁾ for normal environmental conditions -5°C to +40°C

⁽²⁾ contact the manufacturer for applications at deviating temperature ranges

stand: 15.06.2016