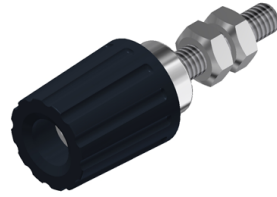


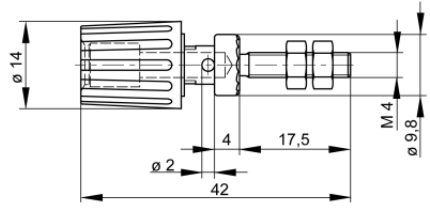


## Sockets

### PK 110



| Product  | PK 110   |
|--|--|
| description  | Pole terminal with claw edge and captive insulated head. 4 mm diameter nickel-plated brass threaded bolt with 2 mm diameter transverse hole. For installation in equipment chassis and switch panels.  |
| article-no. / *colour  | 9317131xx<br><div style="display: flex; justify-content: space-around; align-items: center;"> <div style="text-align: center;"> <br/>00<br/>black         </div> <div style="text-align: center;"> <br/>01<br/>red         </div> </div> <div style="text-align: right; border: 1px solid black; padding: 2px; width: 30px; margin-left: auto;">Ni</div> |
| drawing  |  |
|  |    |
| technical data   |  |
| connection   | M4 thread  |
| rated voltage <sup>(1)</sup>   | 30 VAC / 60 VDC  |
| measurement cat. acc. to IEC 61010   | O <sup>(3)</sup>   |
| rated current <sup>(1)</sup><br>(consider derating curve)                        | 35 A   |
| material socket  | brass, nickel plated   |
| housing material   | PA   |
| temperature range acc. To IEC61010 <sup>(2)</sup>                                | -25 °C to +100 °C  |
| inflammability class acc. to UL 94<br>(only valid for basic material of housing) | V-2  |
| standard   | IEC 61010  |

4 mm system

<sup>(1)</sup> for normal environmental conditions -5°C to +40°C

<sup>(2)</sup> contact the manufacturer for applications at deviating temperature ranges

<sup>(3)</sup> Other circuits that are not directly connected to mains

stand: 30.07.2018