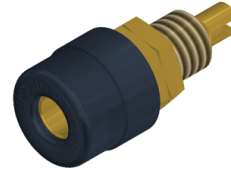

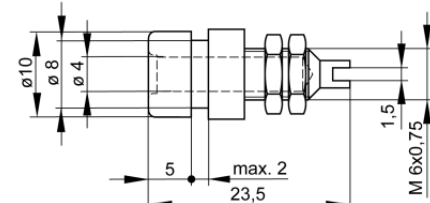


## Sockets

### BIL 20 Au



Product	BIL 20 Au
description	Socket with insulated head and ring for installation in equipment chassis and switchpanels with a wall thickness up to 2 mm. 4 mm diameter gold-plated brass socket, with solder connection.
article-no. / *colour	9301767xx  <span style="border: 1px solid black; padding: 2px;">Au</span>
drawing	
technical data	
connection	M6 thread, solder connection
rated voltage <sup>(1)</sup>	30 VAC / 60 VDC
measurement cat. acc. to IEC 61010	O <sup>(3)</sup>
rated current <sup>(1)</sup> (consider derating curve)	32 A
material socket	brass, gold plated
housing material	PA
temperature range acc. To IEC61010 <sup>(2)</sup>	-25 °C to +85 °C
flammability class acc. to UL 94 (only valid for basic material of housing)	V-2
standard	IEC 61010

4 mm system

<sup>(1)</sup> for normal environmental conditions -5°C to +40°C

<sup>(2)</sup> contact the manufacturer for applications at deviating temperature ranges

<sup>(3)</sup> Other circuits that are not directly connected to mains



stand: 16.07.2018