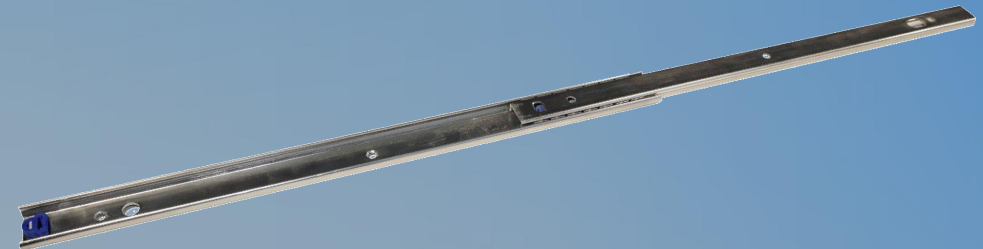
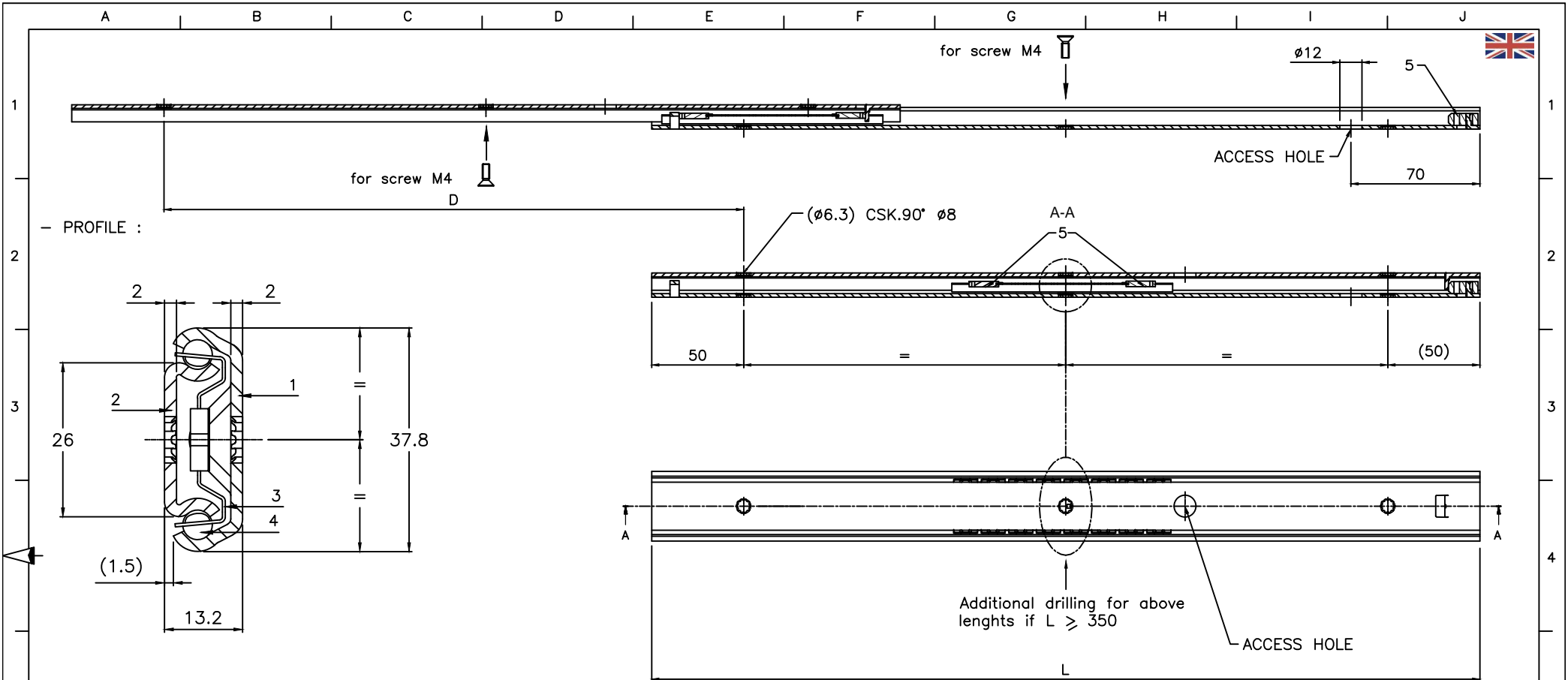


R26

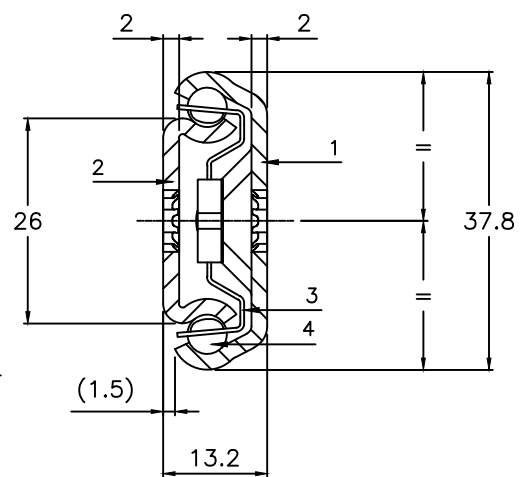
ST26

Acier zingué	Inox	Extension Partielle	 Français	2
Zinc plated steel	Stainless steel	Partial Extension	 English	3
Stahl silbern verzinkt	Edelstahl	Teilauszüge	 Deutsch	4
Pozinkovaná ocel	Nerezová ocel	částečný výsuv	 Český	5
Acero zincado	Acero inoxidable	Extensión Parcial	 Español	6
Acciaio zincato	Acciaio inox	Estensione parziale	 Italiano	7
Verzinkt staal	Roestvrij staal	Gedeeltelijk uittrekbaar	 Nederlands	8
Оцинковка	Нержавеющая сталь	Частичное выдвижение	 Русский	9
Stal ocynkowana	Stal nierdzewna	Wysuw częściowy	 Polski	10





PROFILE :



MATERIAL

	R26	ST26
1 - Inner beam	Steel	Stainless steel
2 - Outer beam	Steel	Stainless steel
3 - Ball cages	Steel	Stainless steel
4 - Bearing Ø5	Steel	Stainless steel
5 - End stop	Plastic	Plastic

SURFACE FINISH

Zinc plating	-
--------------	---

WEIGHT

1.45 Kg/m

OPTIONS :

Different slide lengths, extension, surface finish, Ø and holes centres to customer's requirement.
Foresee an access hole on your frame to fixe the slide

DO NOT DISMOUNT THE SLIDE !

Do not modify the slides !

Dimensions in mm
* Loads indicated for a pair of slides

▭ - Load in a major axis

▭ - Load in a minor axis

Results given according to our load testing protocol (www.chambreilan.com)

Increase space between the beams through spacers not supplied, in order to avoid the scraping due to the deflexion.
Mounting on a minor axis(www.chambreilan.com/1018)

Production according our general manufacturing tolerances (www.chambreilan.com/1016)

R26 - ST26	CHAMBREILAN
01.03.2016	www.chambreilan.com

L	200	250	300	350	400	450	500	550	600	650	700	750	800	850	900
D	125	175	225	260	295	330	380	415	450	485	520	540	560	580	615
▭ Load* (Kg)	60	60	60	65	70	75	80	78	75	73	70	68	65	63	60
▭ Deflexion (mm)	3	3	4	5	7	8	9	9	9	9	9	9	9	9	9
▭ Load* (Kg)	17	17	17	20	22	24	25	25	26	27	28	29	30	31	32
▭ Deflexion (mm)	2	2	3	3	3	4	4	4	4	5	5	5	5	6	6

In a constant effort of improvement, the company reserves the right to modify its products without notice. No contractual information.

